

Pandora BaseStation Firmware Upgrade by SWIM

Why I need to upgrade the FW of the BS

- Because some new Pandora features adding in future might need new BS' firmware support

What you need to prepare (hardware)

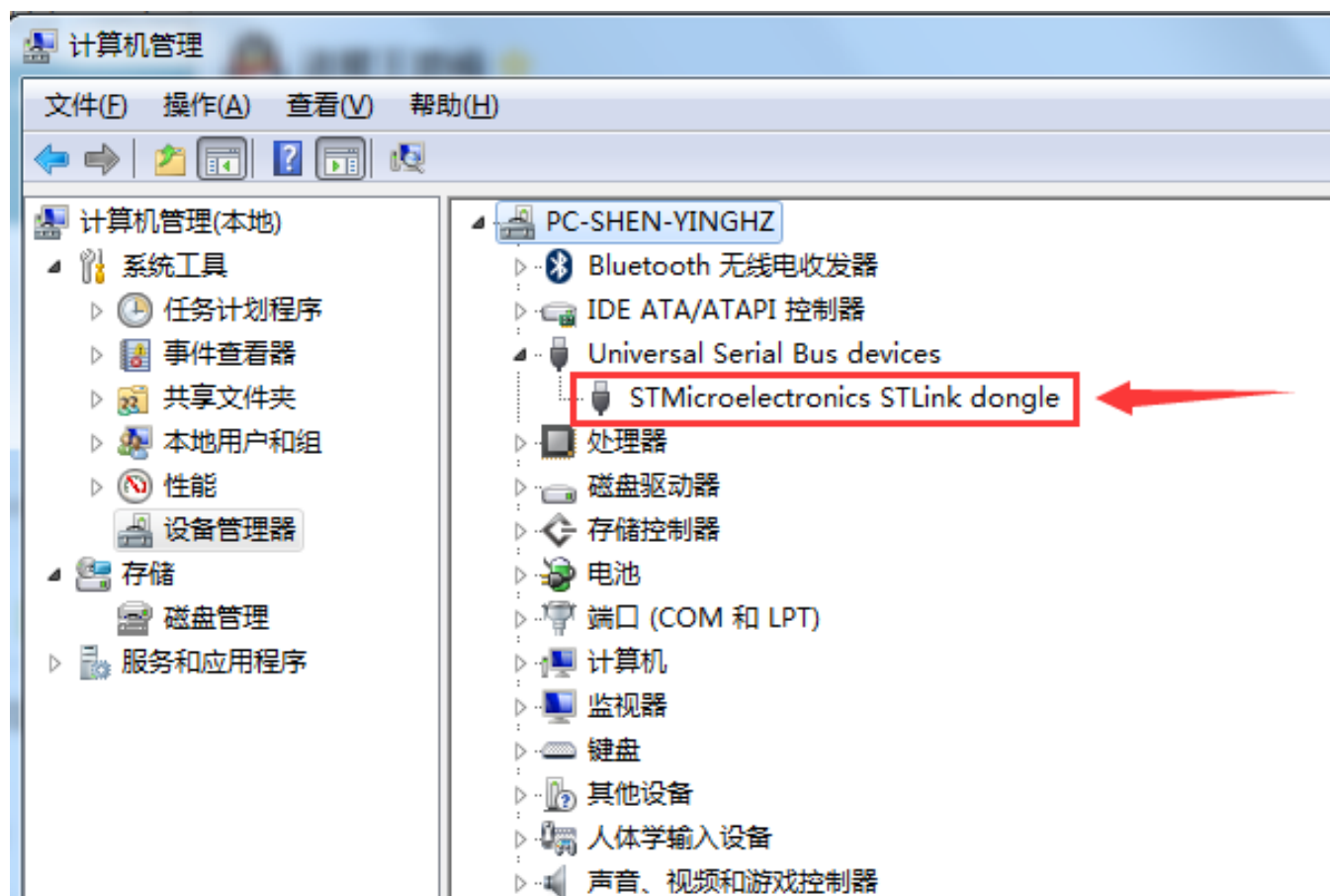
- You need a ST-Link V2 dongle
- You need a 4-PIN cable, one end with 2.54mm female connectors and the other end with 1.27mm PINs



What you need to prepare (software)

- STVP (ST Visual Programmer)
 - Can find the download link here :
http://www.st.com/content/st_com/en/products/development-tools/software-development-tools/stm32-software-development-tools/stm32-programmers/stvp-stm32.html
- ST-Link V2 driver
 - Can find the download link here:
http://www.st.com/content/st_com/en/products/embedded-software/development-tool-software/stsw-link009.html

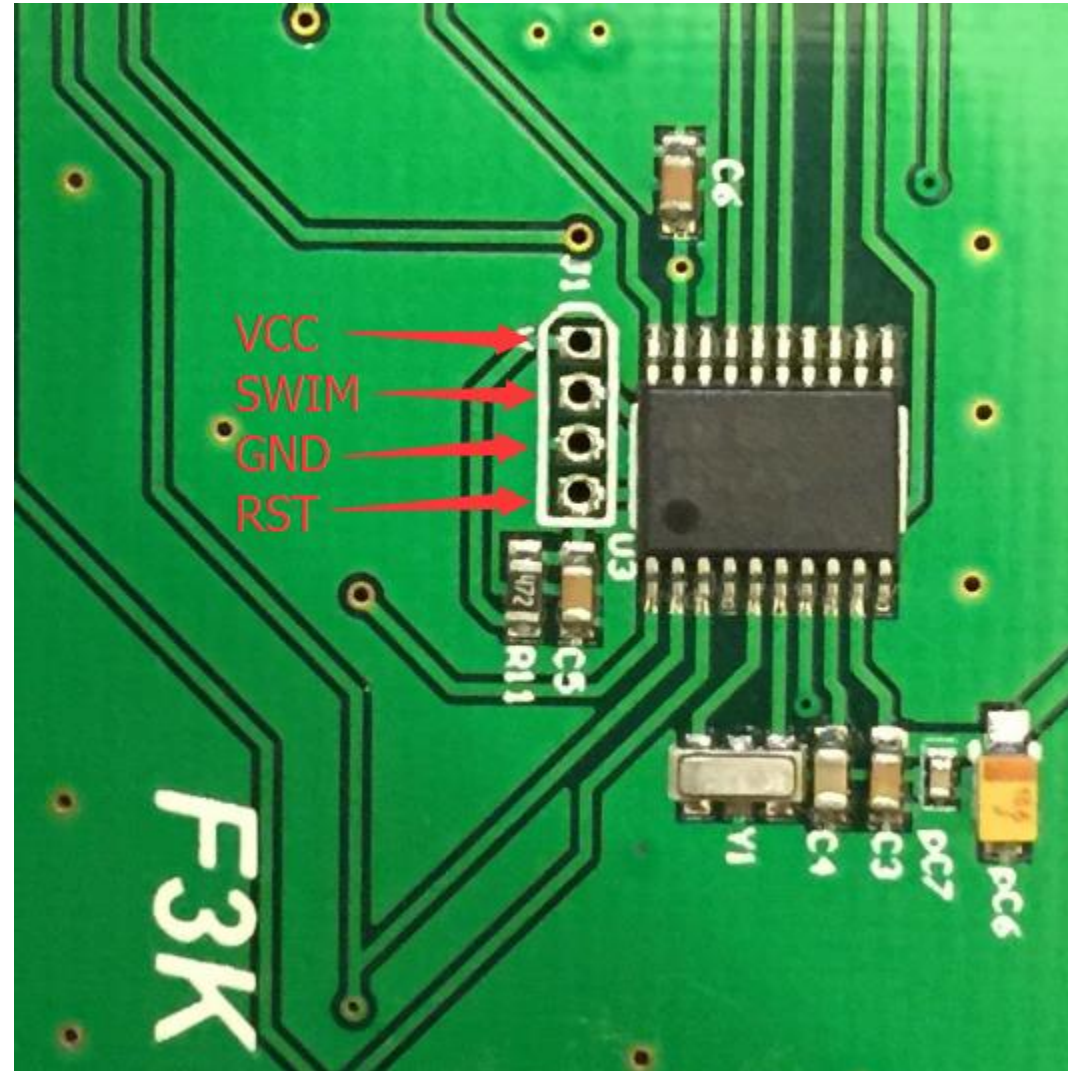
Installed the ST-Link V2 successfully can see



You need to dis-assembly the BaseStation and see the SWD port

- From top to bottom the PIN assignment of the SWIM port is:
 - VCC (3.3V)
 - SWIM
 - GND
 - RST
- Please find the signal pins on the ST-LINK V2 dongle and connect with the BaseStation (Power OFF) correctly

SWIM port on BS' PCB

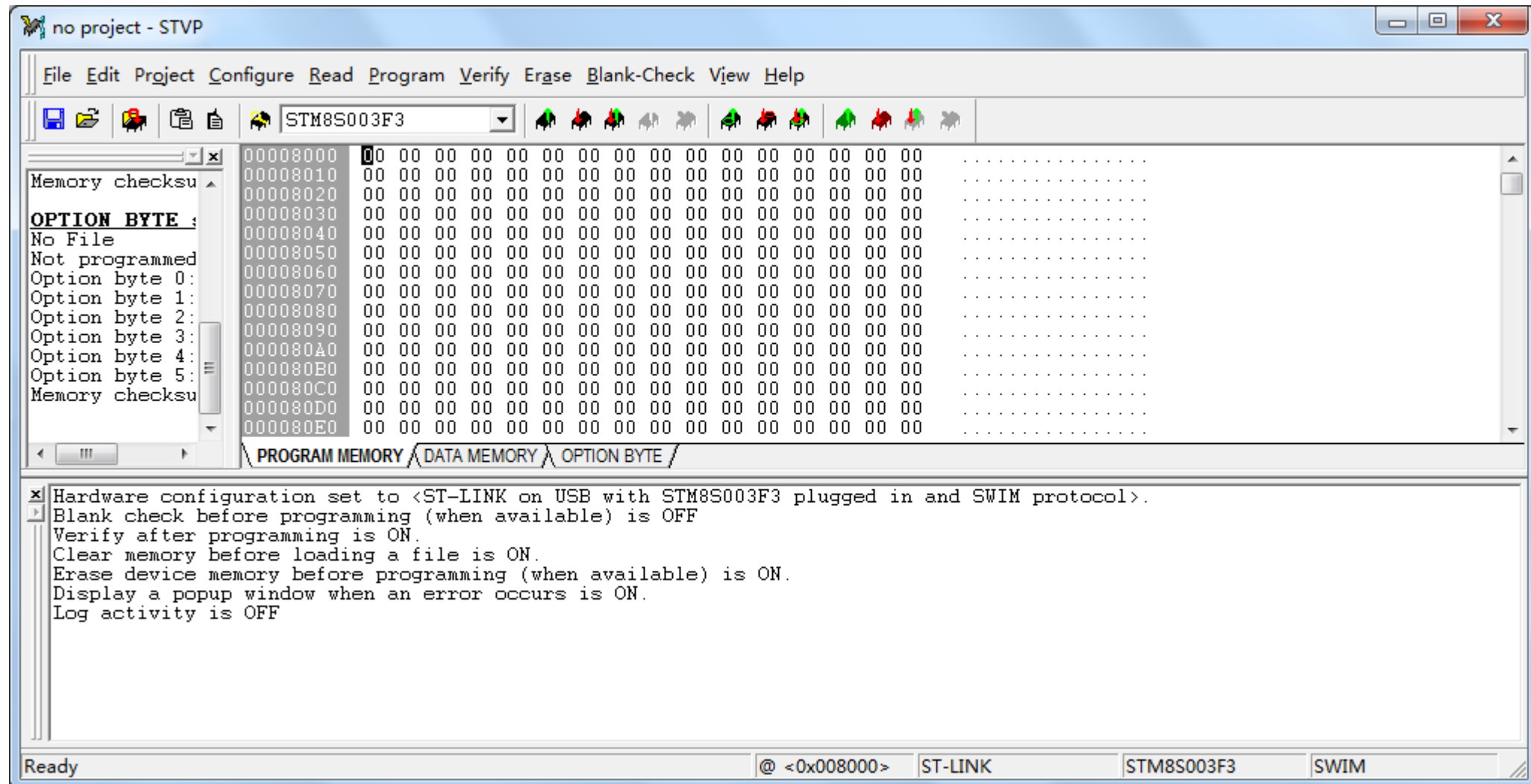


The PINs mapping on the ST-Link V2

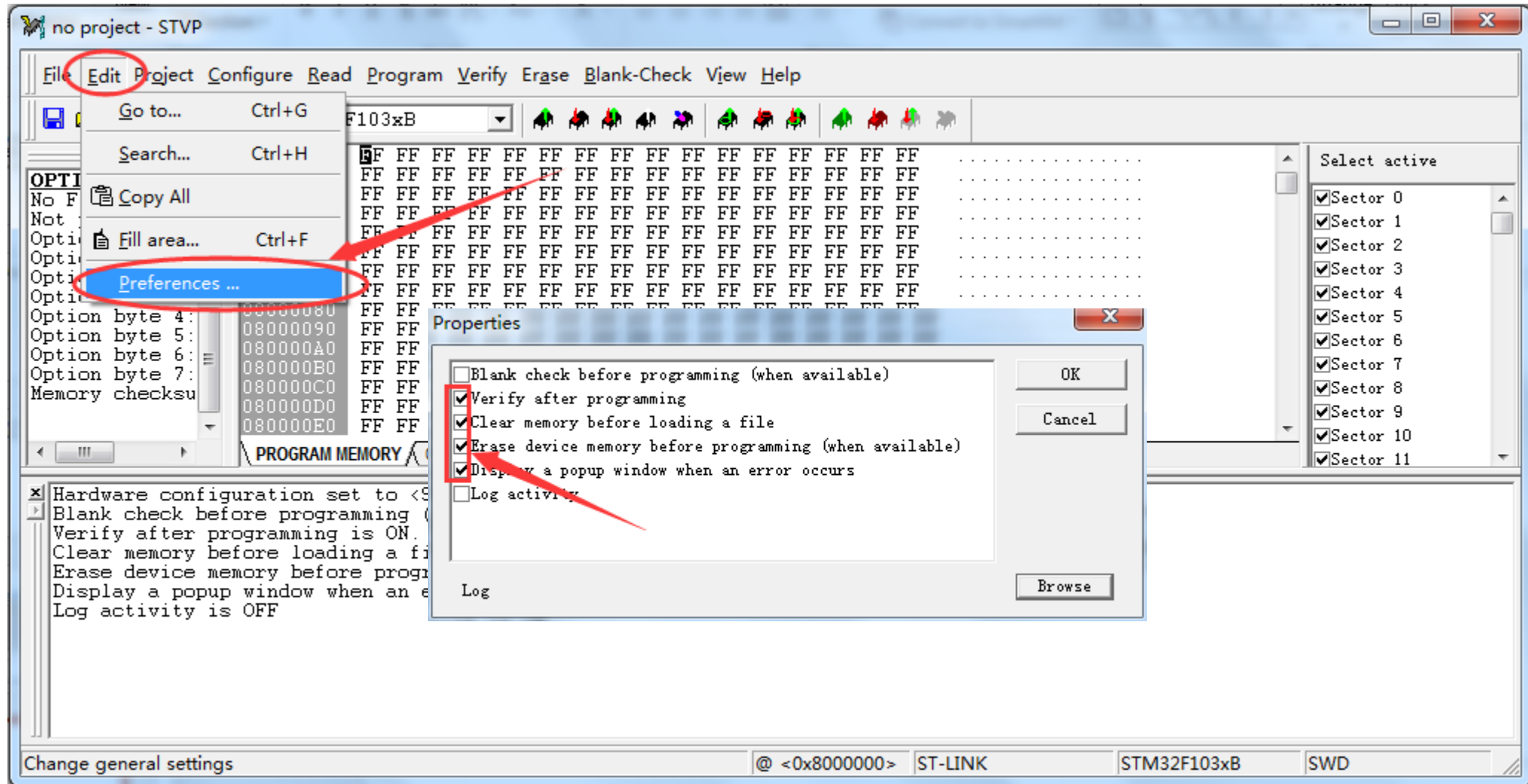
- There are SWIM PINs on the dongle, it's easy to understand the mapping



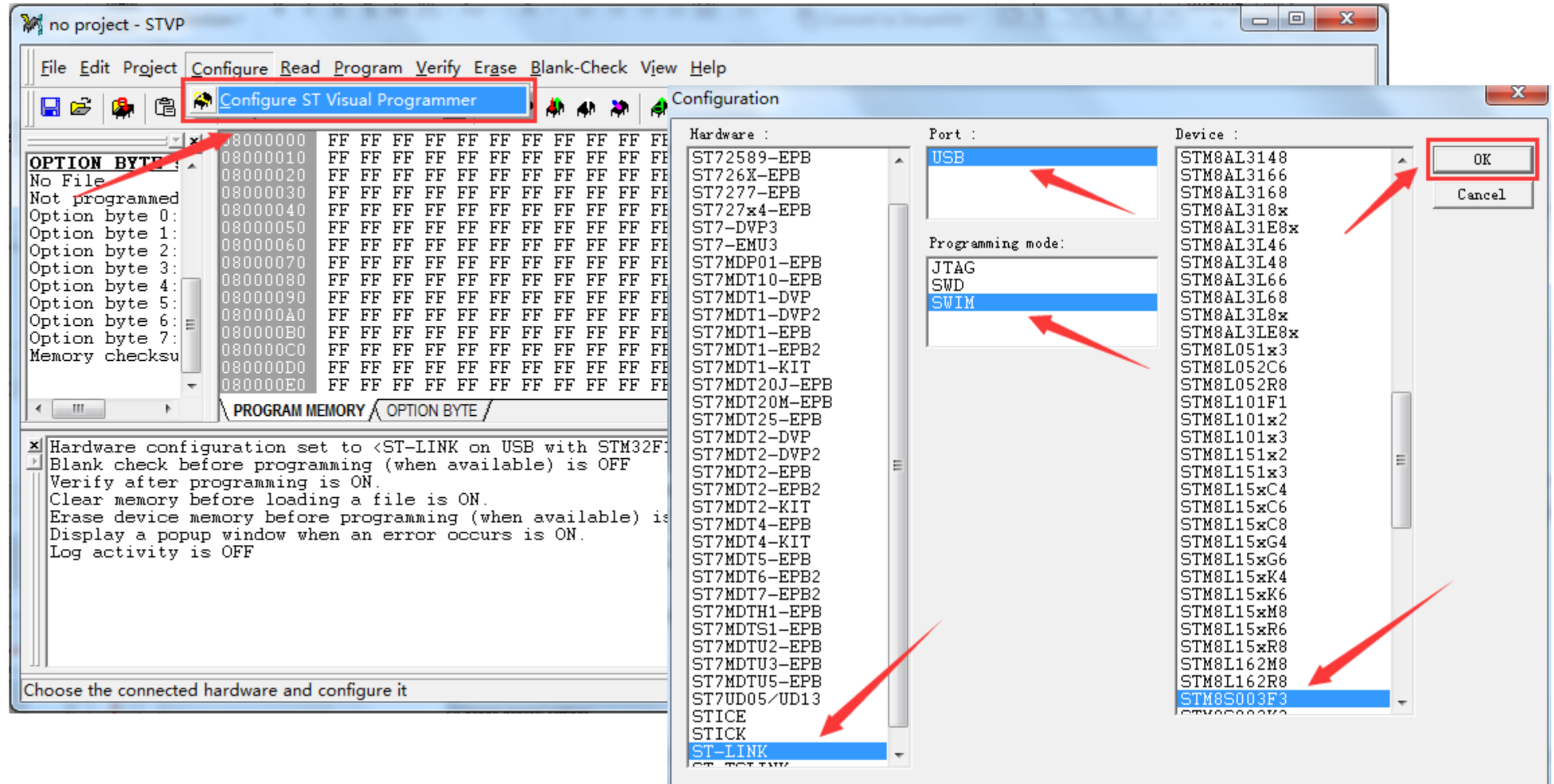
Run the STVP



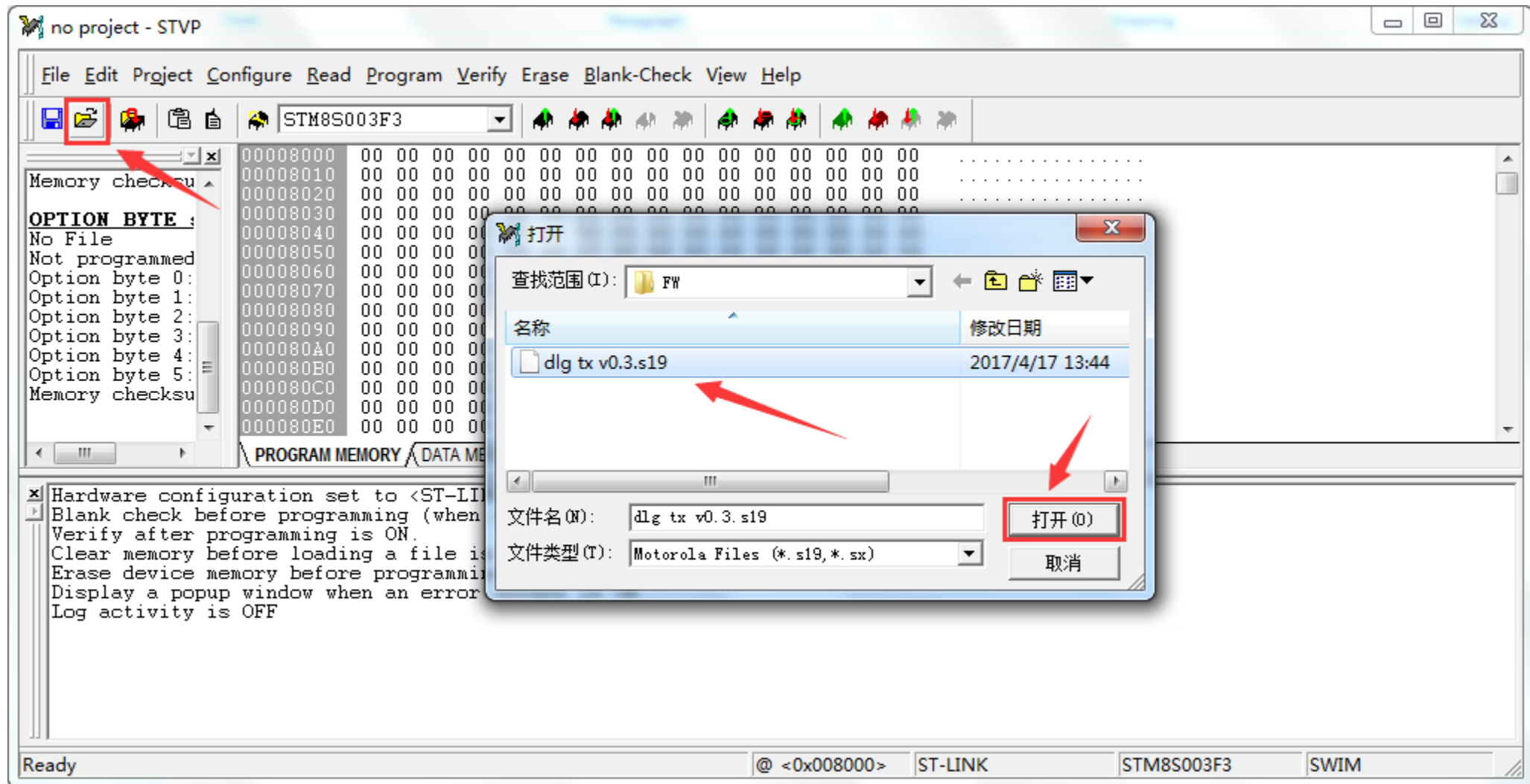
Edit\\Preferences...\\check those items



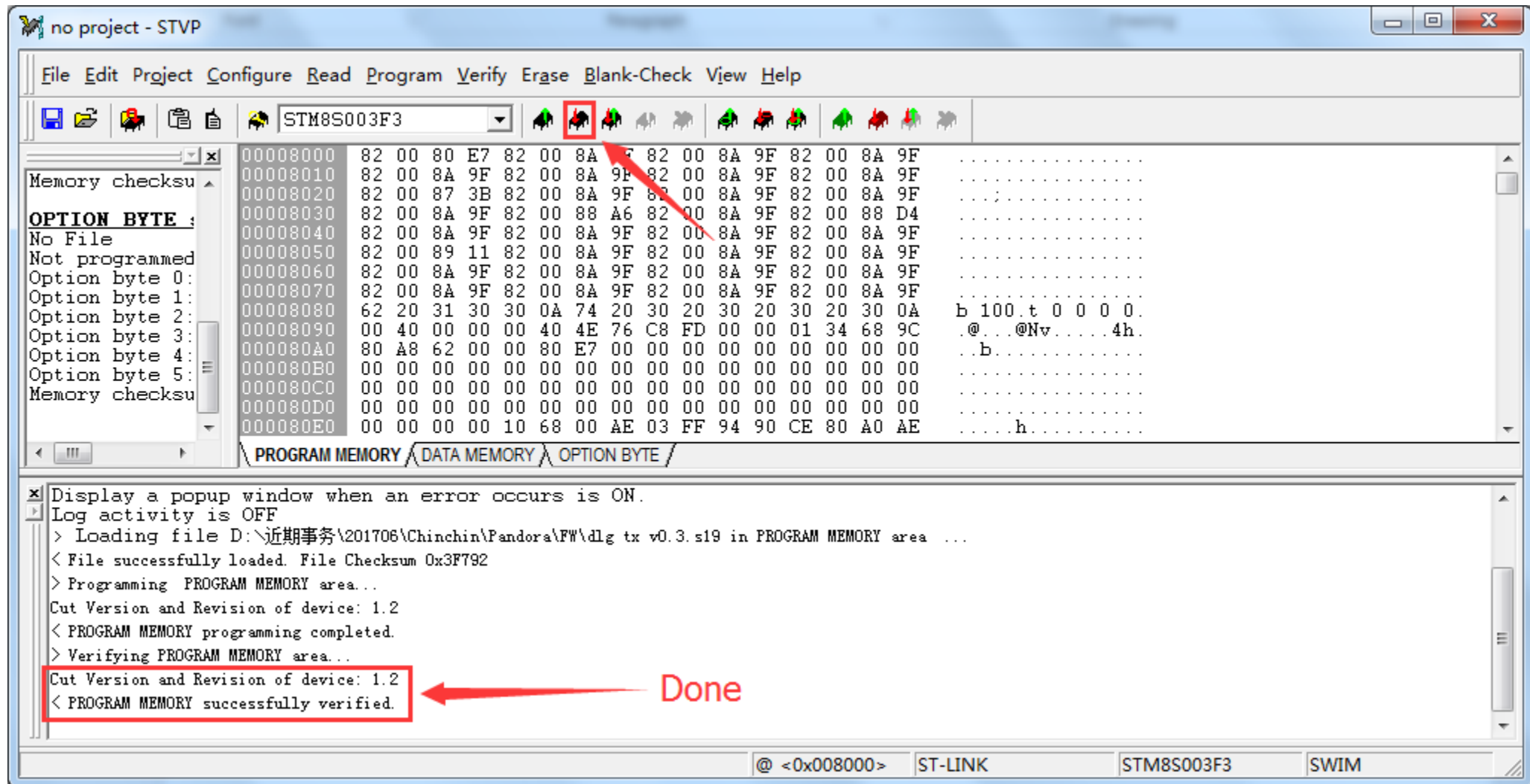
Configure\\select the items like that



Open a .s19 file



Click download button

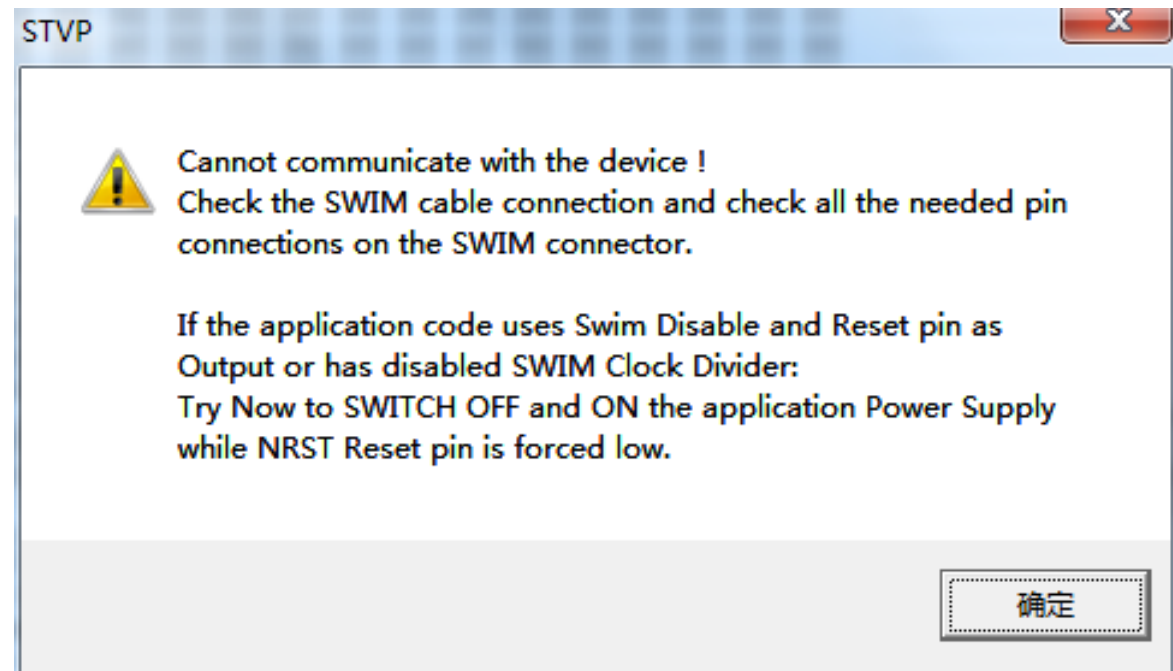


Congratulations !

- Remove the ST-Link V2 dongle
- Re-assembly the BaseStation
- Power on the BaseStation and enjoy the new features bring to you

If you see this error message it might be

- Wrong signal pins connection between ST-Link V2 dongle and BS
- ST-Link V2 without correct windows driver



If meet the issue as “MCU protected” you need to unlock the MCU

