

Pandora battery installation guide

Tools you might need to prepare



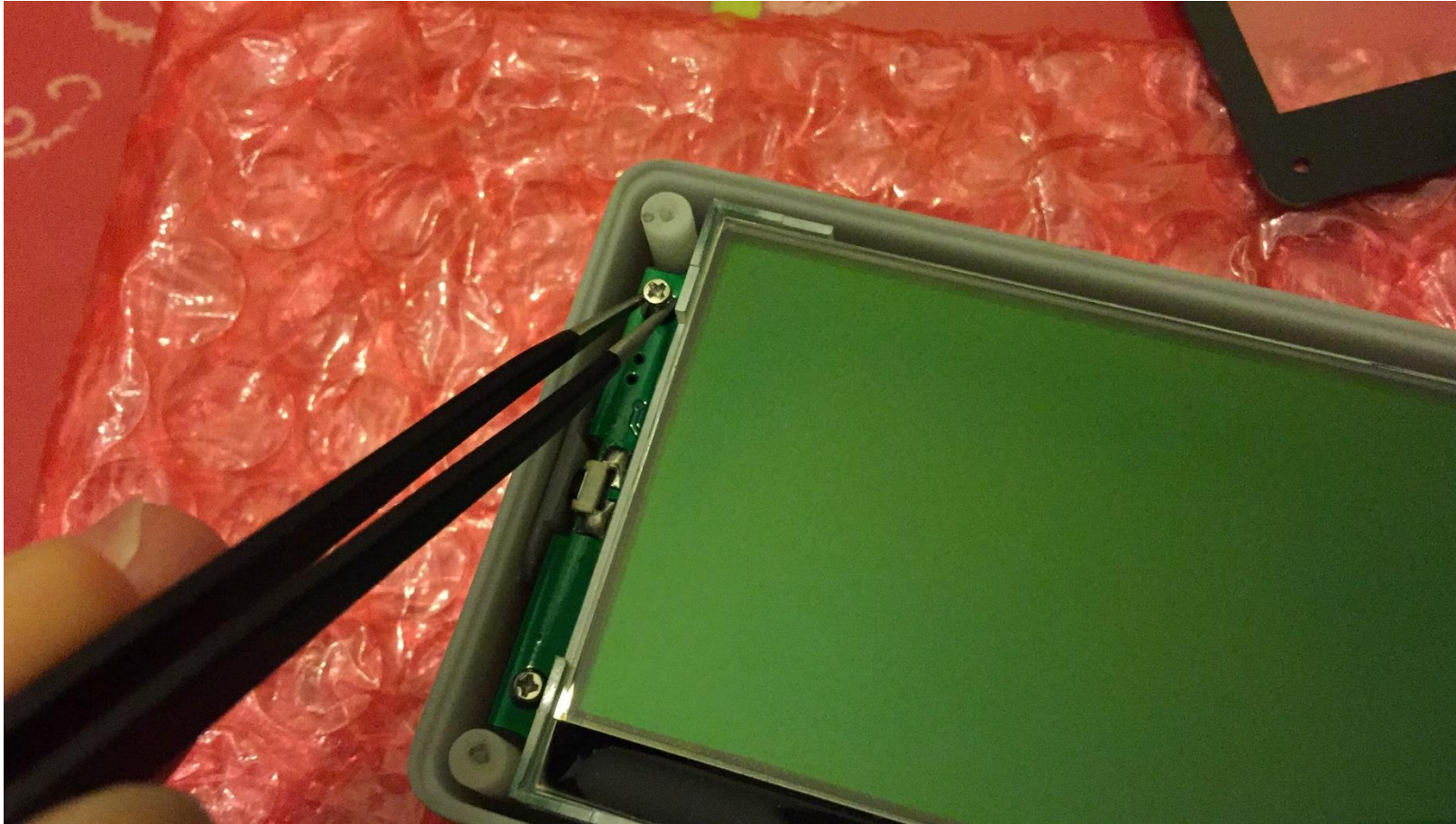
Disassembly step 1: Tools and battery



Disassembly step 2: unscrew and remove the front panel



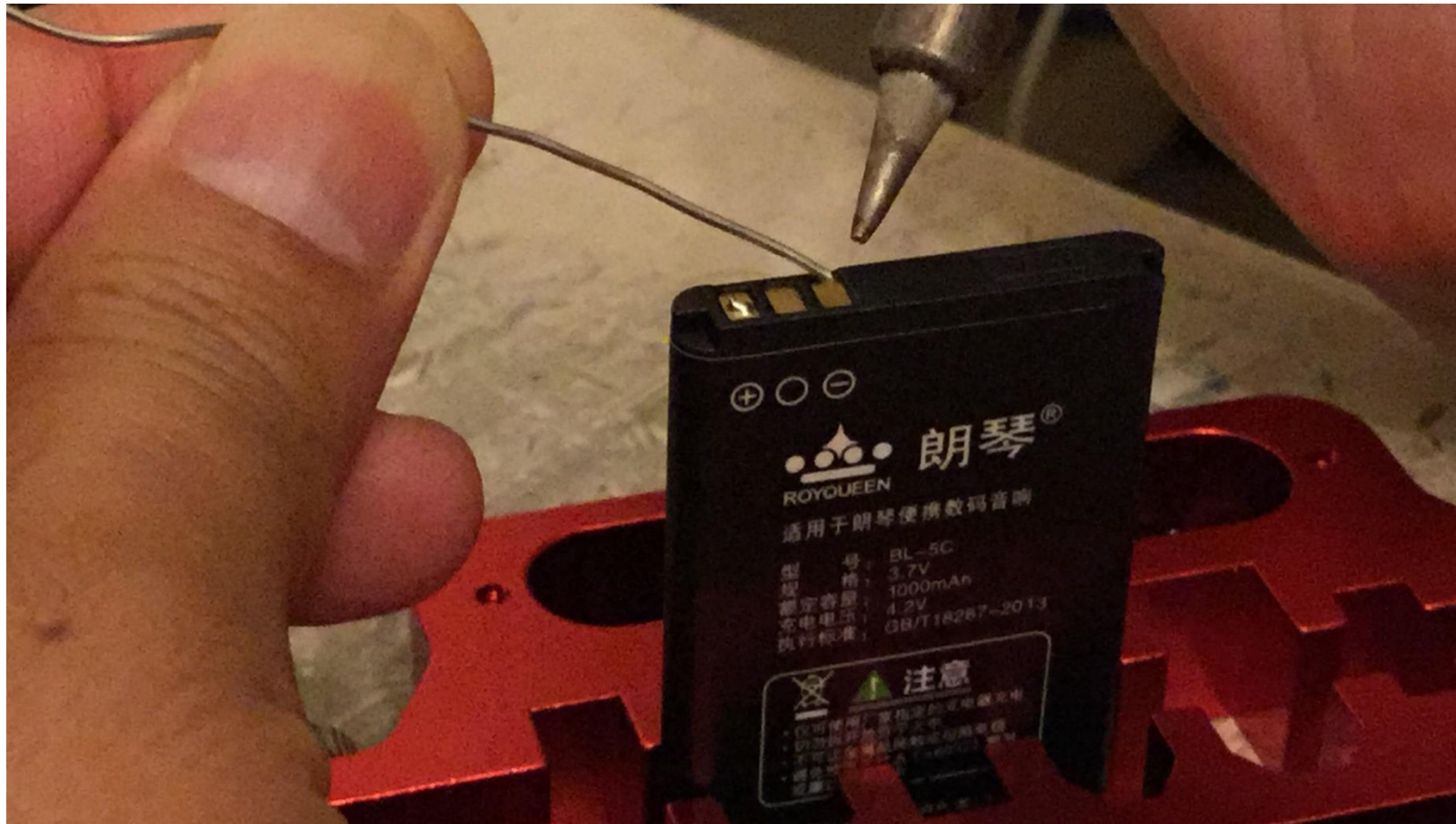
Disassembly step 3: unscrew remove the screws from PCB



Disassembly step 4: remove the PCB
remember the antenna wire routing



Prepare for soldering



Route the antenna like that



Attach the battery onto the PCB



Solder the wires on to the battery



Route the wires and antenna like that



Put the antenna back,



Tear off the protect film of the LCD



Assemble finished



Power on and check, Done !

